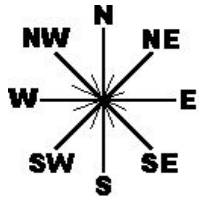


FANWORT ZONE MAP

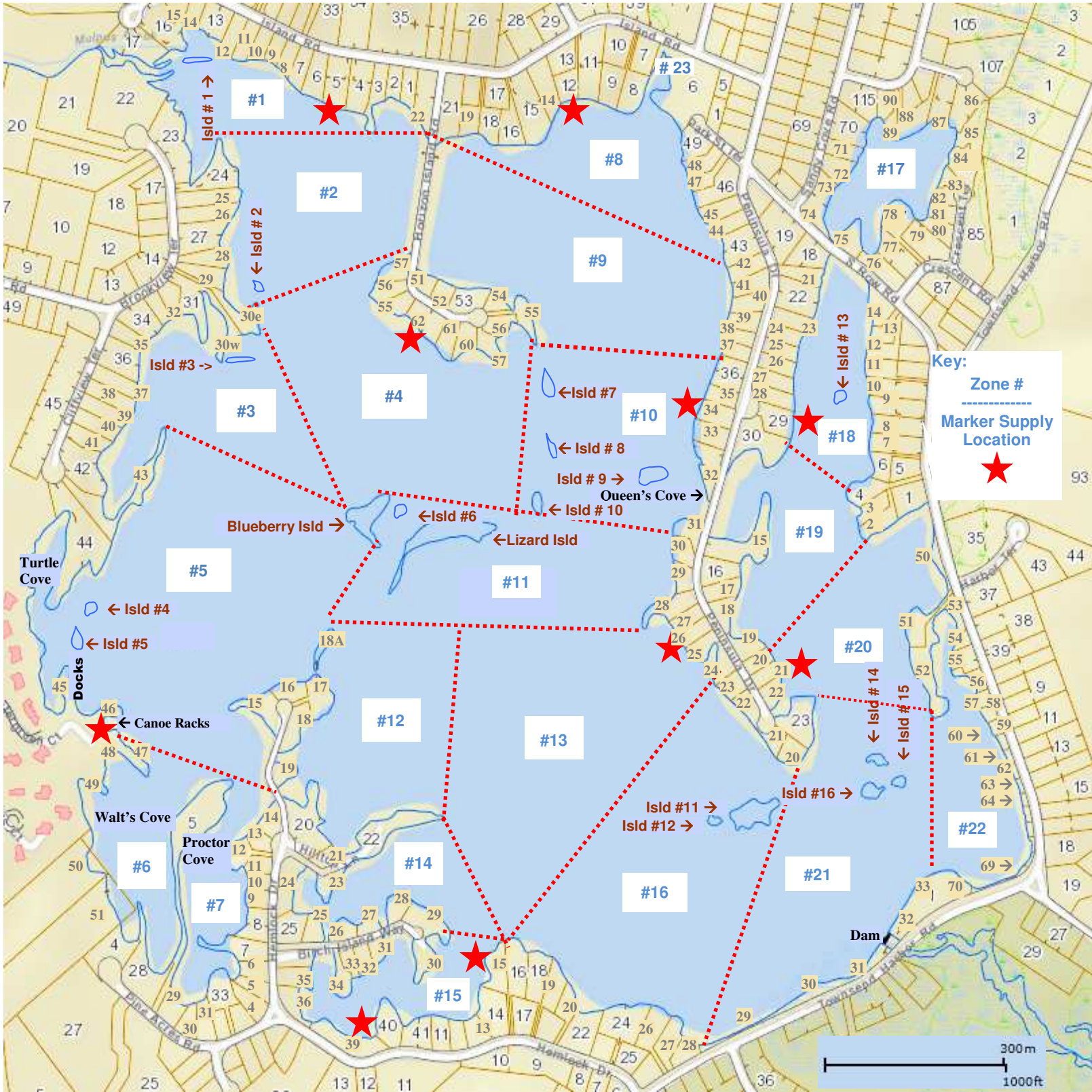
MARKER SUPPLIES ARE LOCATED ON BOAT DOCKS / BEACHES WITH A 

Island reporting ex: Zone 16, Island #12 --- Property reporting ex: Zone 9, Property #41

Report to fanwort@hickoryhillslake.com



FISHING, BOATING OR SWIMMING CLOSE TO MARKERS IS RESTRICTED



Red & White Buoys
Mark Benthic Barriers

Orange = Fanwort is present
Yellow = Fanwort is present



Interested in Fanwort Surveying? Here's how it works

We're a TEAM!

TEAM GOAL – Each team surveys their assigned zone at least once per week (preferably on a sunny, clear, calm day). Mornings or late afternoon seem to work best to view it. Wearing polarized glasses reduces glare, making plants easier to see.

TEAM CAPTAINS – Answer questions and create a team schedule.

If you haven't received your survey schedule, email your captain or fanwort@hickoryhillslake.com

MARKERS – H-shaped orange and yellow markers identify the plants we find in the lake.

We release the weight from the marker and drop it into the water. String unraveling stops when weight hits the lake bottom. The DASH teams harvest these plants and removes the marker.



MARKER PLACEMENT – 5' in front of plant: shore ---> plant ---> marker

MARKER SUPPLIES – Milk crates are located on docks or beaches around the lake and stocked with Orange & Yellow Markers for Surveyor's to mark Fanwort plants. The location of milk crates is indicated with a RED STAR on the map. ★

REPORT FANWORT LOCATION – If you think you found Fanwort, drop an orange marker there and send an email to: fanwort@hickoryhillslake.com. Include the **Zone # and Property #** or **Zone # and Island #** it's closest to.

Report Like This → Zone #, Property/Island #, short description (small/large, 10' off shore, etc), # of Plants, # of Markers

GOOGLE MAP GPS LOCATION – Sending GPS Locations with your smart phone is also useful (not required).



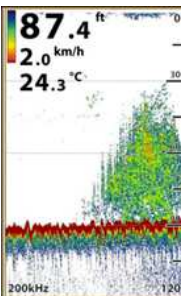
1) OPEN the GOOGLE MAPS APP

2) Press and hold the **BLUE DOT** marking your location. You'll notice a **"DROPPED PIN"** message now displays.

3) Select the words **"Dropped Pin"** that will now appear below the map

4 & 5) Select the word **"SHARE"**, then select your email account.

6) The pre-populated email just created, includes a link to your GPS location, so just **add the Zone #, Property # and how many plants it's marking** to the email, and send it to fanwort@hickoryhillslake.com. Your sighting is now reported!



ADDITIONAL SURVEY TIPS:

- 1) It's helpful to have a marker ready to toss close to the plant as you spot it. This helps you find it again as you float away a little and then you're able to slowly paddle back and adjust the marker at the proper spot.
- 2) The H-shaped markers sometimes need one manual flip after it's reached the bottom in order to sit flat on top of the water.
- 3) Using a Fish Finder is very helpful – Look for sudden tall weeds in the display as pictured to the left here.

FANWORT FACTS:

- July 22, 2011 two board members discovered hundreds of plants in our Boat Cove – survey's began & on September 11, 2011, about 5 plants in Queen's Cove were found next
- As of 2017, every part of our lake has seen Fanwort
- No known lake has ever eradicated Fanwort
- Our mission is to keep Fanwort at bay (maintenance mode)
- 5 Ways to reduce Fanwort are DASH, Hand Pulling, Benthic Barriers, Drawdown and Chemicals
- Fanwort is not the only invasive weed threatening lakes
- Boat trailers are the highest risk of invasive weed entry
- Fanwort spreads by fragmentation – breaking it, i.e. motors, fishing lures, turbidity & auto-fragments on its own in the Fall

FANWORT PICTURES:

