

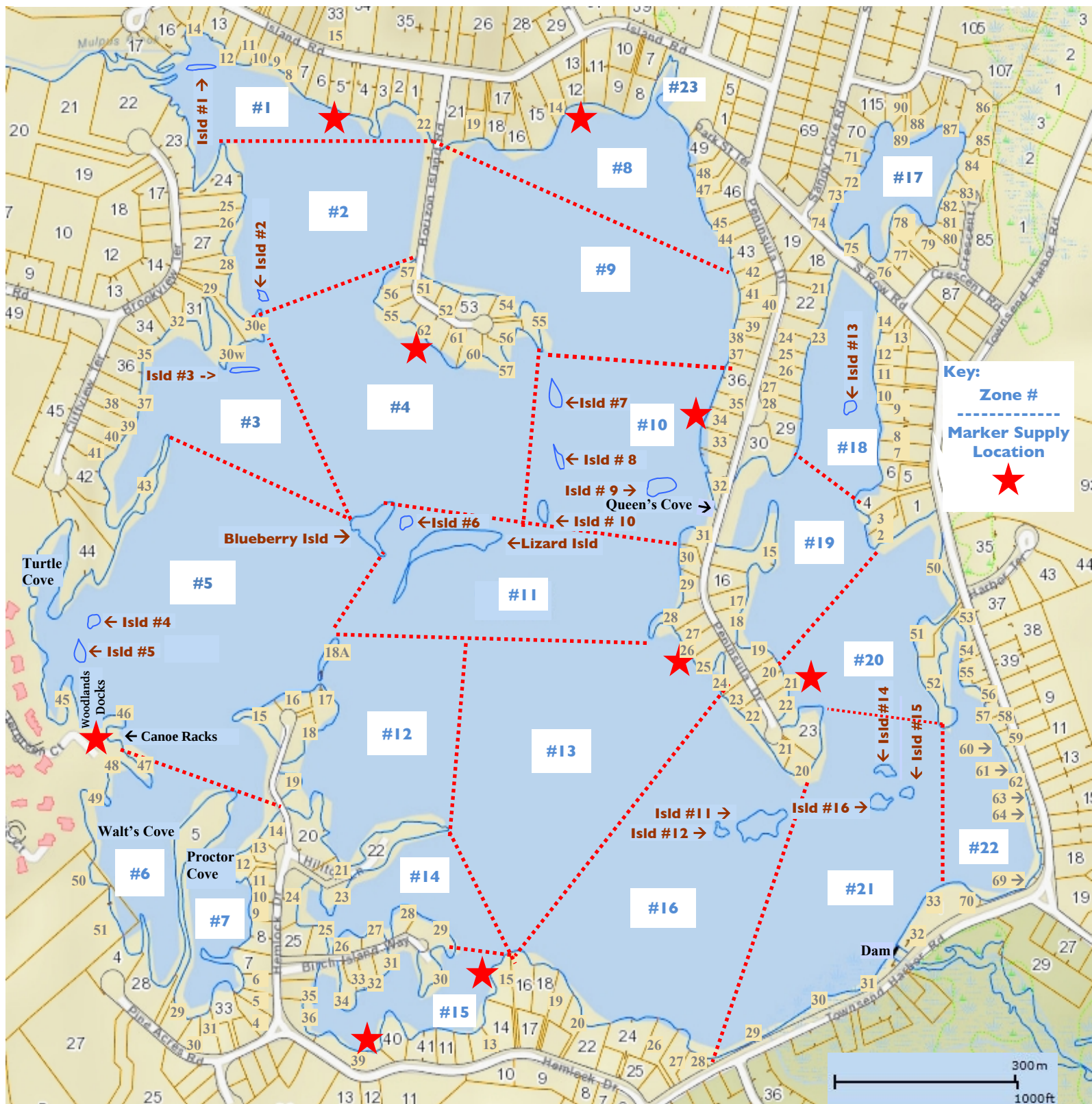
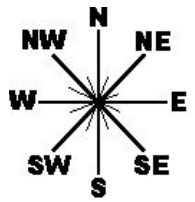


FANWORT SURVEY ZONE MAP

MARKER SUPPLIES ARE LOCATED ON BOAT DOCKS / BEACHES WITH A 

Report Fanwort location to <http://hickoryhillslake.com/fanwort>

FISHING, BOATING OR SWIMMING CLOSE TO MARKERS IS RESTRICTED



Red & White Buoys
Mark Benthic Barriers

Orange = Fanwort is present
Yellow = Fanwort is present



Last updated 6/12/22

Join a Team Today and Help Us Find Fanwort! Here's How We Do It...

REPORT FANWORT LOCATION – If you think you found Fanwort, drop a marker 5' in front of the plant, then report the location to us at <http://hickoryhillslake.com/fanwort> by answering a few questions about your sighting. That's it!

ZONES – We've split the lake into 23 Zones. Each of our volunteers look for Fanwort in the zone they've signed up for.

ZONE TEAM GOAL – Each team goal is to survey its zone at least once per week (preferably on a sunny, clear, calm day). Mornings or late afternoon seem to work best to view it. Wearing polarized glasses reduces glare, making plants easier to see.

ZONE TEAM CAPTAIN – Answer questions from the team and create a zone team schedule. If you haven't received your survey schedule, email your captain or fanwort@hickoryhillslake.com

MARKERS – H-shaped **orange & yellow** markers identify where Fanwort is located in the lake. We release the weight from the marker and drop it into the water. String unraveling stops when the weight hits the lake bottom. Our Dive Survey or DASH teams harvest these plants and removes the marker.

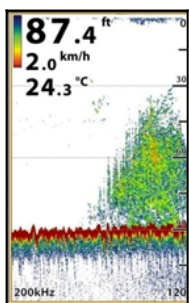


MARKER PLACEMENT – 5' in front of plant: shore ---> plant ---> marker

MARKER SUPPLIES – Milk crates are located on docks or beaches around the lake and stocked with Orange & Yellow markers for Surveyor's to mark Fanwort plants. The location of milk crates is indicated with a RED STAR on the map. ★

HOW TO JOIN – Just send an email to fanwort@hickoryhillslake.com to join a zone team today!

ADDITIONAL SURVEY TIPS:



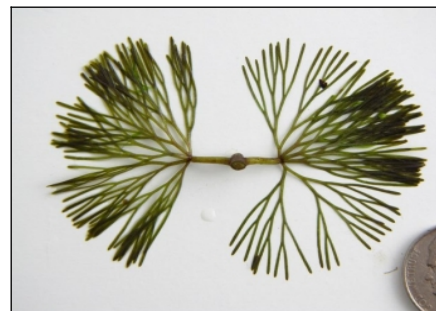
- 1) It's helpful to have a marker ready to toss close to the plant as you spot it. This helps you find it again as you float away a little and then you're able to slowly paddle back and adjust the marker to the proper spot.
- 2) The H-shaped markers sometimes need one manual flip after it's reached the lake bottom in order to sit flat on top of the water.
- 3) Using a Fish Finder is very helpful – Look for sudden tall weeds in the display as pictured to the left. When seen like this, drop a marker and report your sighting online at <http://hickoryhillslake.com/fanwort>
- 4) Windy days are not our friend. Set out on sunny, clear, calm days. Mornings or late afternoon seem to work best to view it. Wearing polarized glasses reduces glare, making plants easier to see.

FANWORT FACTS:

- July 22, 2011 two board members discovered hundreds of plants in our Boat Cove – surveys began & on September 11, 2011, about 5 plants in Queen's Cove were found next
- As of 2017, every part of our lake has seen Fanwort
- No known lake has ever eradicated Fanwort
- Our mission is to keep Fanwort at bay (maintenance mode)
- 5 Ways to reduce Fanwort are DASH, Hand Pulling, Benthic Barriers, Drawdown and Chemicals

- Fanwort is not the only invasive weed threatening lakes
- Boat trailers are the highest risk of invasive weed entry
- Fanwort spreads by fragmentation – breaking it, i.e. motors, fishing lures, turbidity, auto-fragmenting in the Fall
- A single leaf likely cannot grow a new plant (need pair)
- Seeds likely have a limited role in dispersal in New England
- Plants most often mistaken for Fanwort in our lake are Coontail, Mermaid Weed and baby/young Bladderwort

FANWORT PICTURES:



Visit our website to learn more about our Dive Survey teams @ <http://hickoryhillslake.com/survey>
Follow Us On Facebook @ **Survey Team Of Hickory Hills Lake**